

Ancient China



Geography

 **Barriers: high mountain ranges, deserts**

 Tien Shan

 Himalayas

 Gobi Desert

 **River Valleys**

 Huang He

 Yangzi







Shang Dynasty

- 1650 BC Shang gained control of Northern China
- First Chinese civilization
- Government:
 - Kings & noble women
 - Clans controlled much of the land
 - City-State system
- Most were peasants/farmers



Shang (cont.)

Religious Beliefs

-  Complex beliefs; many gods & nature spirits.
-  Nobles were said to have special connections to the gods.
-  Yin and Yang
 -  Delicate balance of the universe





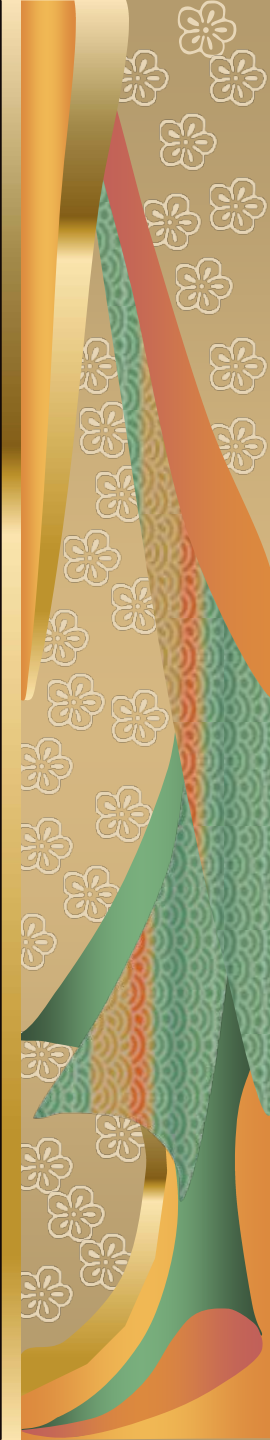
System of Writing

Oracle Bones

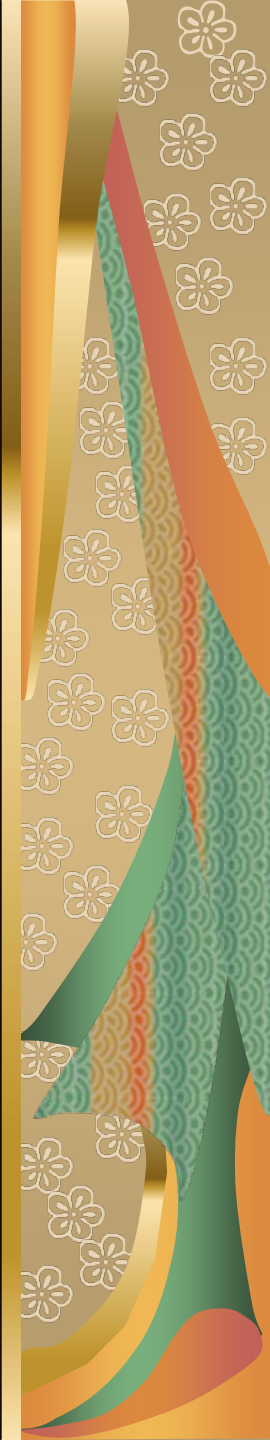
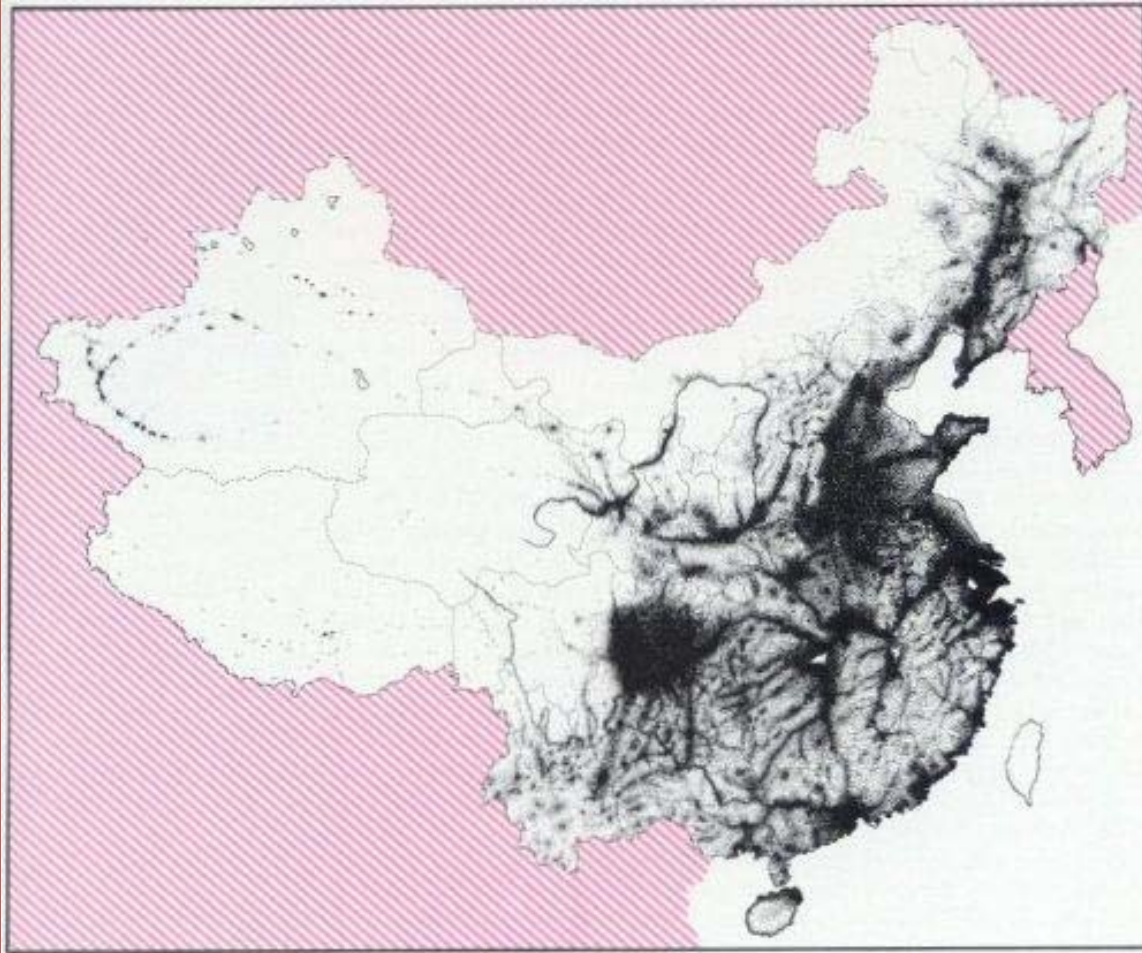
-  Animal bones & turtle shells used to interpret answers from ancestors.

Written language

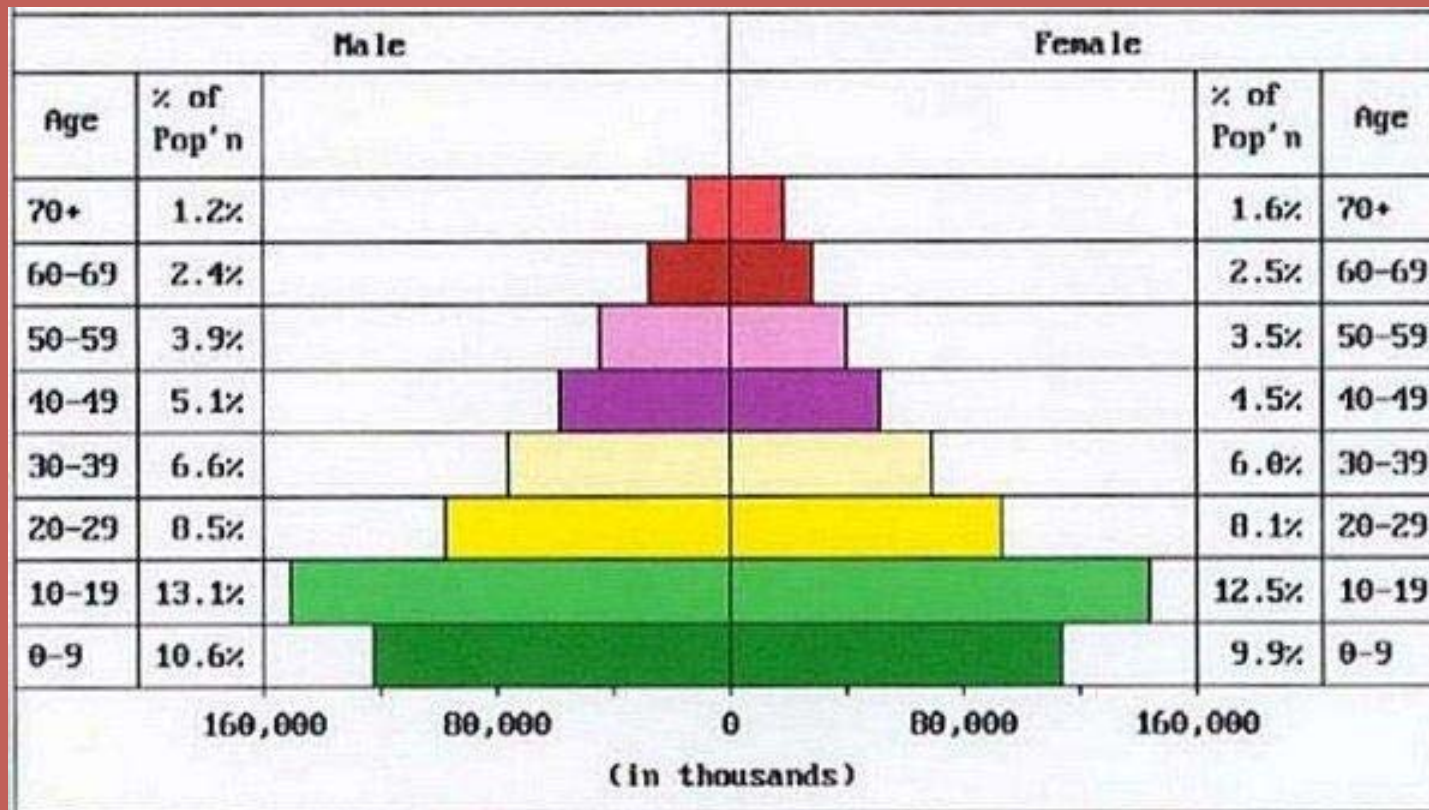
-  Pictographs & ideographs that represent ideas and thoughts
-  Over 10,000 characters!



Population distribution – one dot equals 5,000 people.

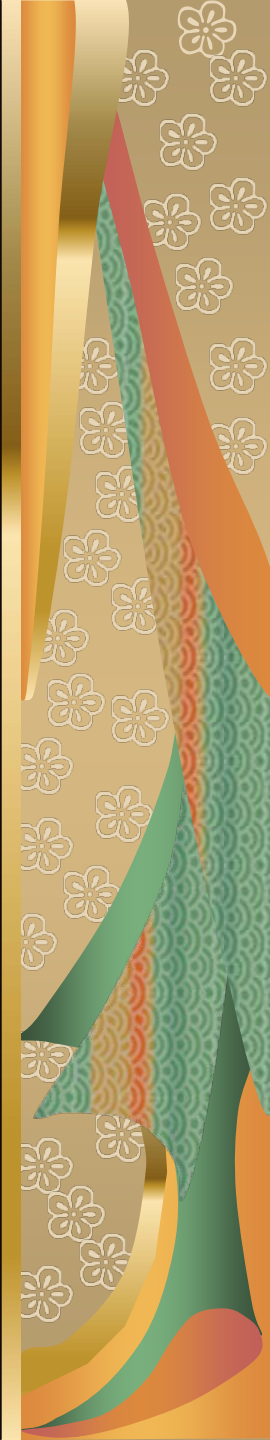


Population demographics



- Total Population: 1,151,487,000
- Total Male Pop'n: 591,864,000
- Total Female Pop'n: 559,623,000

- Life Expectancy (Male): 68 years
- Life Expectancy (Female): 72 years

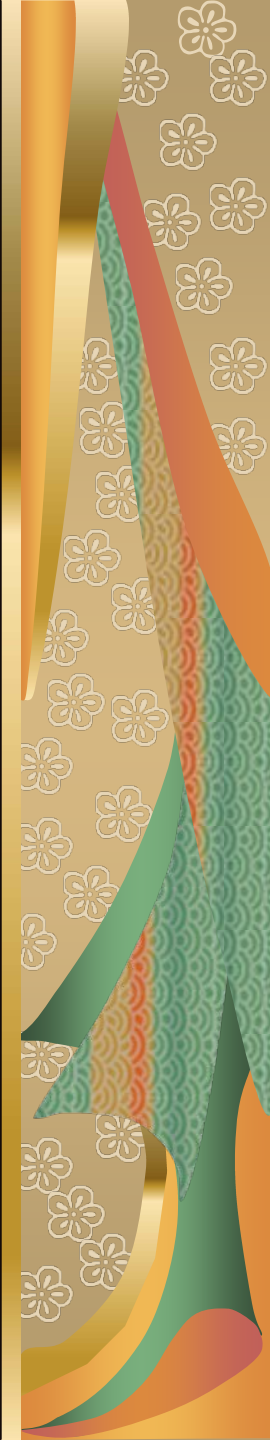


Chinese Phonetic Alphabet

a	ㄚ
an	ㄢ
ang	ㄤ
ao	ㄠ
b	ㄅ
c(i)	ㄘ
ch	ㄑ
d	ㄉ
ê	ㄝ
e	ㄜ
ei	ㄟ
en	ㄢ
(e)ng	ㄥ

er	ㄦ
f	ㄈ
g	ㄍ
h	ㄏ
i	ㄨ
j	ㄐ
k	ㄎ
l	ㄌ
m	ㄇ
n	ㄋ
o	ㄛ
ou	ㄛ

p	ㄆ
q	ㄑ
r	ㄖ
s(i)	ㄙ
sh	ㄕ
t	ㄊ
(w)u	ㄨ
x	ㄒ
(y)i	ㄩ
(y)ü	ㄩ
z(i)	ㄗ
zh	ㄗ



母亲

Mother

父亲

Dad

奶奶

Grandma

爷爷

Grandpa

儿子

Son

女儿

Daughter

兄弟

Brother

姐妹

Sister

姨妈

Aunt

叔父

Uncle

表亲

Cousin

朋友

Friend

孙子

Grandson

孙女

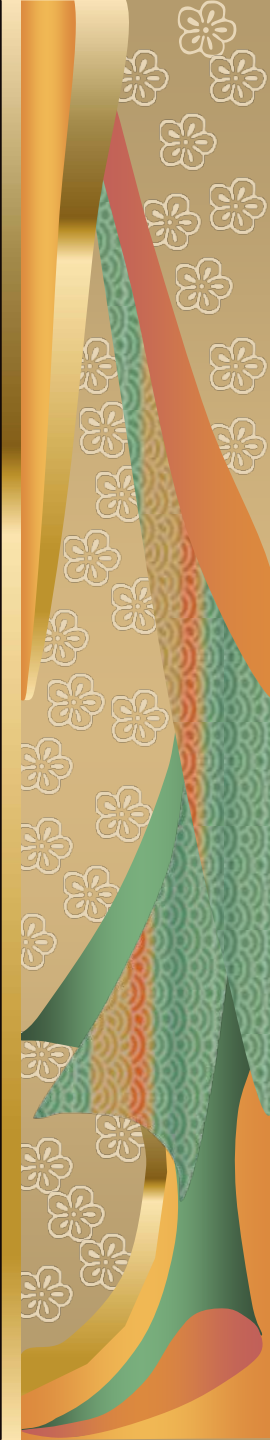
Granddaughter

侄女

Niece

外甥

Nephew



Zhou Dynasty

- Overthrew the Shang; “Mandate of Heaven”
- Feudalism: govt. system where local lords owned land but owed service to the ruler.
- Economic growth: farming, manufacturing growth
 - Trade expanded
 - First use of currency
- Achievements: silk-making, bronze, first books

